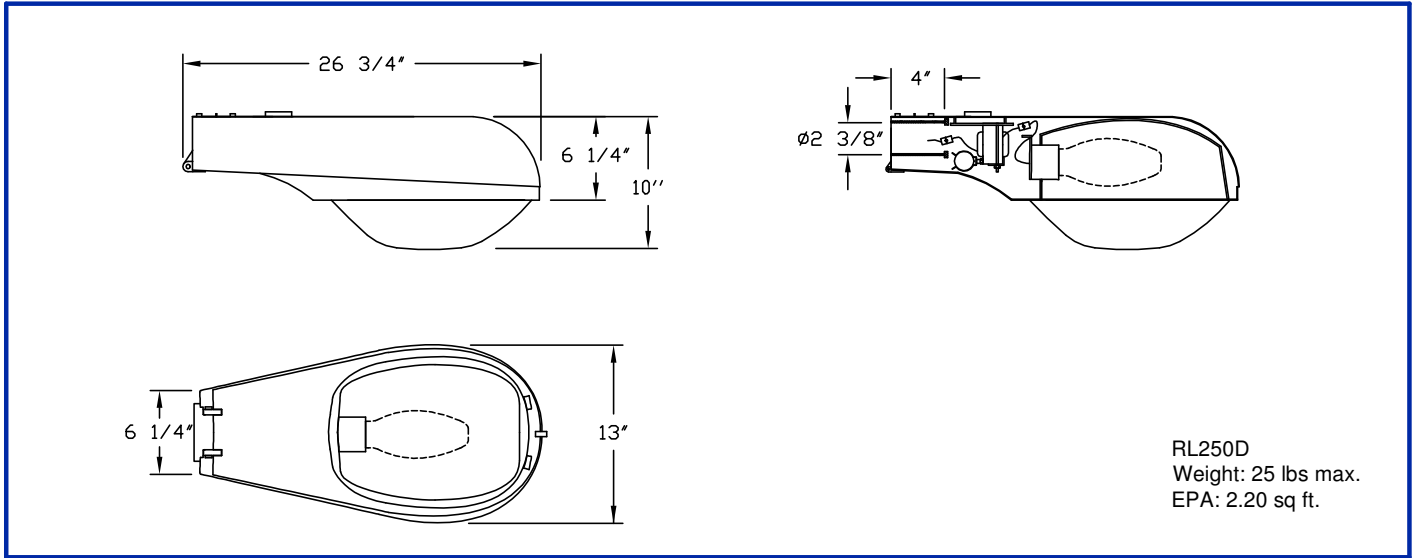


RL250D

ROADWAY SERIES

Cobra Head




FEATURES

- Die cast aluminum housing.
- Adjustable E39 mogul base socket (house side).
- Anodized high purified aluminum reflector.
- Tempered sag glass diffuser.
- External paddle type stainless steel bail latch.

- IES type II, medium, cutoff optics.
- Optical chamber IP65 rated; ballast chamber IP44.
- Lamp by others.

INSTALLATION

2-3/8"ID x 4"L slip fitter, with two S/S bolts.

1. MODEL RL250D <input type="checkbox"/>	4. VOLTAGE QT (Qual Tap 120, 208, 240, 277) <input type="checkbox"/> TT (Tri Tap 120, 277, 347) <input type="checkbox"/>	7. COLOR Window Grey RAL 7040 <input type="checkbox"/> Natural Aluminum ¹ <input type="checkbox"/> Custom ¹ <input type="checkbox"/> ¹ Minimum order quantities apply, call factory for details. 
2. DUFFUSER TYPE SAG Clear sagged borosilicate prismatic glass <input type="checkbox"/>	5. OPTICS SR-2 Aluminum reflector IES type II <input type="checkbox"/>	
3. LIGHT SOURCE 150 HPS <input type="checkbox"/> 250 HPS <input type="checkbox"/>	6. OPTIONS FUS Internal fusing <input type="checkbox"/> PEC Luminaire integrated locking photocell <input type="checkbox"/> PRE Photocell receptacle (photocell by others) <input type="checkbox"/>	



1280 Fewster Drive, Mississauga, Ont, Canada L4W 1A4
 1-800-267-3175 (905) 238-2648 Fax: (905) 238-9060
sales@hclighting.com www.hclighting.com